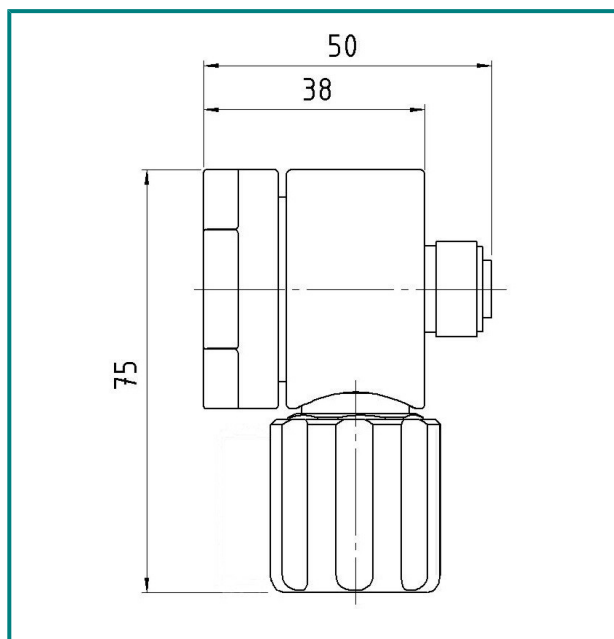


# Diaphragm shut-off valve HP 502

- straight way valve max. 40 bar



## Description:

The diaphragm shut-off valve HP 502 is a shut-off for point of use regulators.

## Application area:

The HP 502 is a shut-off valve to be used with pressure regulator HP 410 as a point of use for Laboratory benches and wall mounting versions.

## Order details:

### Material:

HP502 = stainless steel  
HP502MS = brass

HP502-	Gas
type	gas type

## Technical details:

Body:	stainless steel 1.4404 electropolished or brass, nickel and matt chrome plated
Gasket:	PCTFE
Diaphragm:	1.4435
Leakage rate: against atmosphere	$10^{-8}$ mbar l/s He
Gas purity:	$\leq 6.0$
Max. Pressure:	40 bar
Operating temp.:	-20°C to +70°C
Weight:	450g
Threads:	inlet G 3/8 f outlet G 3/8 m

## Hornung Quality standard

The company Hornung is certified to **DIN EN ISO 9001 and ISO 14001:2009**. All single parts are manufactured, assembled and tested by in-house production. The finished parts are therefore under all criteria of German quality control with 100% final inspection.

Hornung GmbH  
Rathenaustraße 55, 63263 Neu-Isenburg

Phone: +49 6102 7883-70  
Fax: +49 6102 7883-40

[www.hornung.org](http://www.hornung.org)  
[info@hornung.org](mailto:info@hornung.org)